

18x11 DOTS MATRIX LED DRIVER WITH 12MHZ SPI

DESCRIPTION

The IS31FL3743B is a general purpose 18xn (n=1~11) LED Matrix programmed via 12MHz SPI interface. Each LED can be dimmed individually with 8-bit PWM data and 8-bit DC scaling data which allowing 256 steps of linear PWM dimming and 256 steps of DC current adjustable level.

Additionally each LED open state can be detected, IS31FL3743B store the open information in Open-Registers. The Open Registers allowing MCU to read out via SPI, inform MCU whether there are LEDs open or short LEDs.

FEATURES

- Supply voltage range: 2.7V to 5.5V
- 18 current sinks (Maximum)
- Support 18xn (n=1~11) LED matrix configurations
- Individual 256 PWM control steps
- Individual 256 DC current steps
- Global 256 DC current steps
- SDB rising edge reset SPI module
- 24kHz PWM frequency
- 12MHz SPI interface
- State lookup registers
- Individual open and short error detect function
- 180 degree phase delay operation to reduce power noise
- De-Ghost
- Cascade for synchronization of chips
- UQFN-40 (5mmx5mm) package

QUICK START



Figure 1: Photo of IS31FL3743B Evaluation Board

RECOMMENDED EQUIPMENT

- 5.0V, 2A power supply

ABSOLUTE MAXIMUM RATINGS

- ≤ 5.5V power supply

Caution: Do not exceed the conditions listed above, otherwise the board will be damaged.

PROCEDURE

The IS31FL3743B evaluation board is fully assembled and tested. Follow the steps listed below to verify board operation.

Caution: Do not turn on the power supply until all connections are completed.

- 1) Short JP1 to enable the control of board MCU (default status).
- 2) Connect the 5VDC power to VCC/GND of CON4, or plug in the USB power input to micro-USB.
- 3) Turn on the power supply, pay attention to the supply current. If the current exceeds 1A, please check for circuit fault.

EVALUATION BOARD OPERATION

The IS31FL3743B evaluation board has five display modes. Press K1 to switch configurations:

Note: See Appendix for each mode's detail.

- 1) (Default mode) Rainbow #1.
- 2) Rainbow #2.
- 3) Purple breath.
- 4) Change colors.
- 5) White.

Note: IS31FL3743B solely controls the FxLED function on the evaluation board.

ORDERING INFORMATION

Part No.	Temperature Range	Package
IS31FL3743B-QULS4-EB	-40°C to +125°C, Industrial	UQFN-40, Lead-free

Table 1: Ordering Information

For pricing, delivery, and ordering information, please contacts ISSI's analog marketing team at analog@issi.com or (408) 969-6600.

SOFTWARE SUPPORT

JP1 default setting is close circuit. If it is set to open, the on-board MCU will stop working. The SPI pins and SDB pin are set to High Impedance. External SPI and SDB signals can be connected to TP4 to control the IS31FL3743B LED driver.

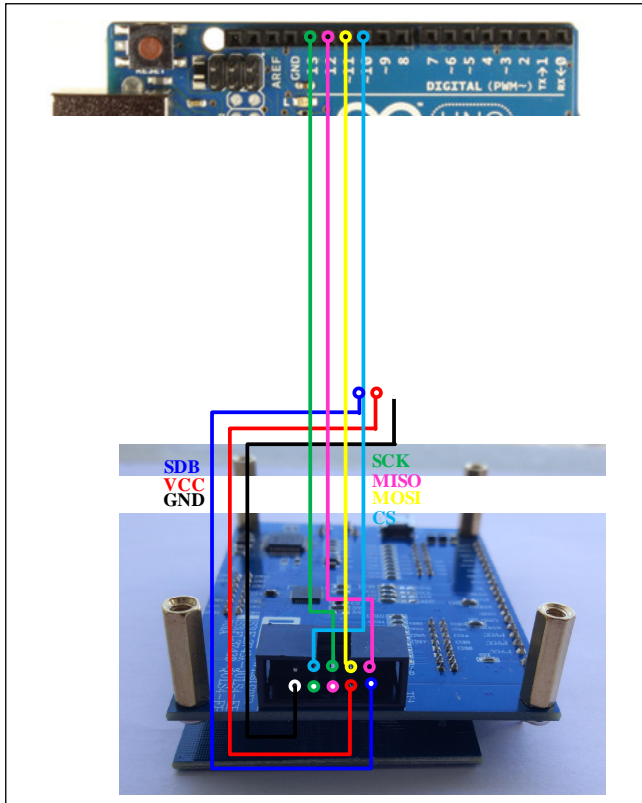


Figure 2: Photo of Arduino UNO connected to Evaluation Board

The steps listed below are an example using the Arduino for external control.

The Arduino hardware consists of an Atmel microcontroller with a bootloader allowing quick firmware updates. First download the latest Arduino Integrated Development Environment IDE (1.6.12 or greater) from www.arduino.cc/en/Main/Software. Also download the Wire.h library from www.arduino.cc/en/reference/wire and verify that pgmspace.h is in the directory ...program Files(x86)/Arduino/hardware/tools/avr/avr/include/avr/. Then download the latest IS31FL3743B test firmware (sketch) from the ISSI website <http://ams.issi.com/US/product-analog-fxled-driver.shtml>.

- 1) Check if the interface selection resistors are replaced to 4.7k Ω resistors on MISO/ CS/ SCK/ MOSI position. If these resistors is 0R, ext-control will fail due to Arudino is 5V power rail while IS31FL3743B is 3V power rail.
- 2) Open JP1.
- 3) Connect the 7 pins from Arduino board to IS31FL3743B EVB:
 - a) Arduino 5V pin to IS31FL3743B EVB VCC.
 - b) Arduino GND to IS31FL3743B EVB GND.
 - c) Arduino 3.3V pin to IS31FL3743B EVB SDB.
 - d) Arduino SCK (13) to IS31FL3743B EVB SCK.
 - e) Arduino MISO (12) to IS31FL3743B EVB MISO.
 - f) Arduino MOSI (11) to IS31FL3743B EVB MOSI.
 - g) Arduino SS (10) to IS31FL3743B EVB CS.
 - h) If Arduino use 3.3V MCU VCC, connect 3.3V to IS31FL3743B EVB SDB, if Arduino use 5.0V MCU VCC, connect 5.0V to EVB SDB.
(Arduino UNO is 5.0V, so SDB=5.0V)
- 4) Use the test code in appendix I or download the test firmware (sketch) from the ISSI website, a .txt file and copy the code to Arduino IDE, compile and upload to Arduino.
- 5) Run the Arduino code and the initial mode will change the RGB LED colors.

Please refer to the datasheet to get more information about IS31FL3743B.

18x11 DOTS MATRIX LED DRIVER WITH 12MHZ SPI

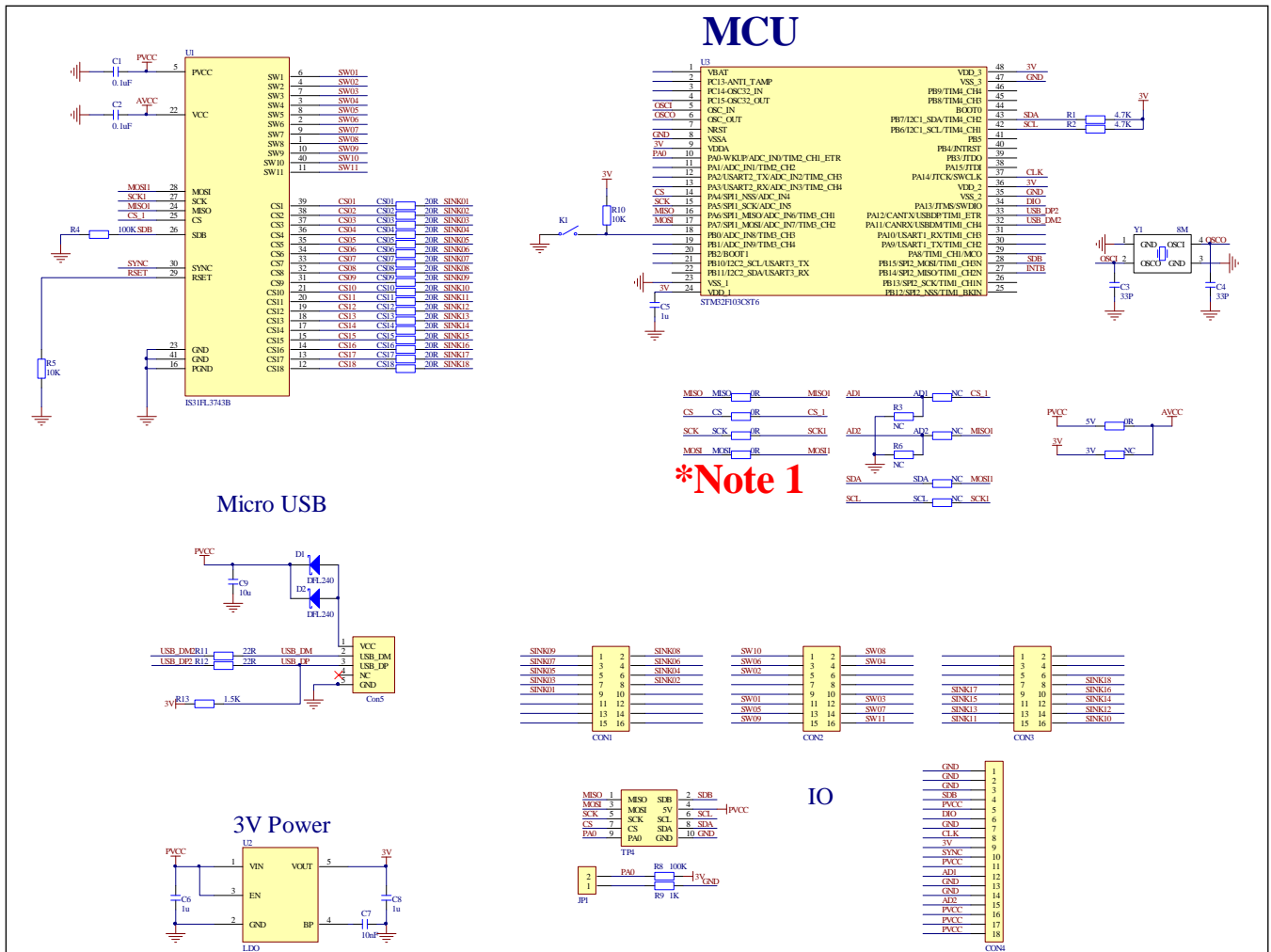


Figure 3: IS31FL3743B Application Schematic

Note 1: IS31FL3743B use SPI interface and MISO, CS, SCK, MOSI position need to short by 0R resistors. In order to use the Arduino for external control, MISO, CS, SCK, MOSI positions are changed by 4.7k resistors.

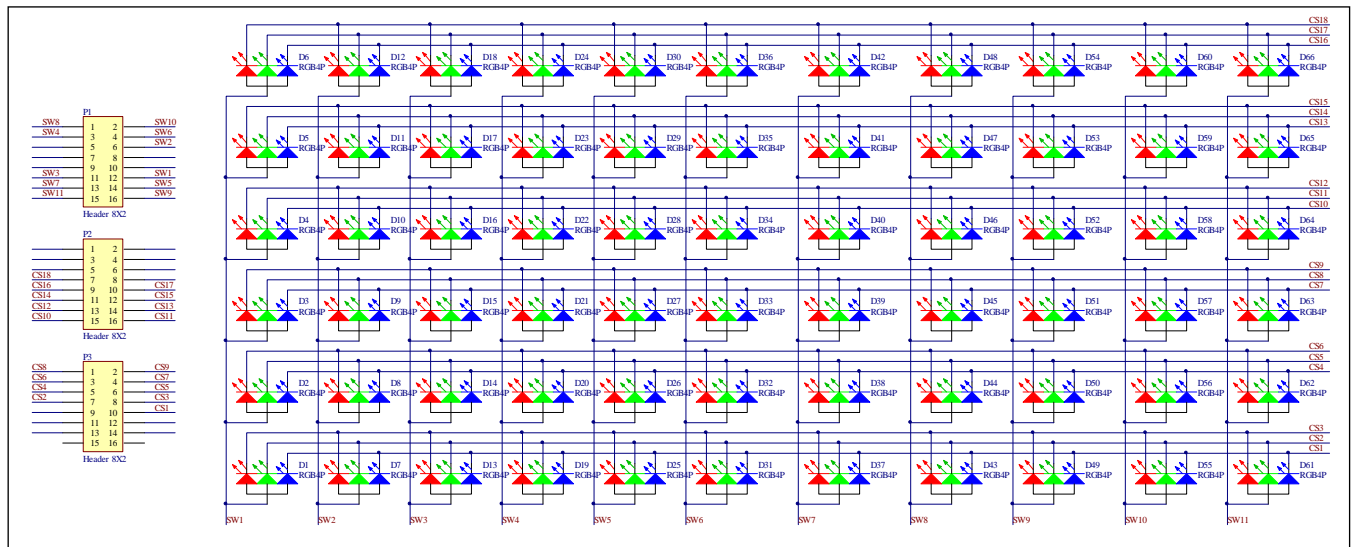


Figure 4: FxLED 6x11 ARRAY Application Schematic

18x11 DOTS MATRIX LED DRIVER WITH 12MHZ SPI

BILL OF MATERIALS

IS31FL3743B

Name	Symbol	Description	Qty	Supplier	Part No.
LED Driver	U1	Matrix LED Driver	1	ISSI	IS31FL3743B
LDO	U2	Reduced voltage	1	SGMICRO	SGM2019-3.3V
MCU	U3	Microcontroller	1	STM	STM32F103C8T6
Diode	D1,D2	Diode, SMD	2	DIODES	DFLS240
Crystal	Y1	Crystal, 8MHz	1	JB	HC-49S
Resistor	R1,R2	RES,4.7k,1/10W,±5%,SMD	2	Yageo	RC0603JR-074K7L
Resistor	R4,R8	RES,100k,1/10W,±5%,SMD	2	Yageo	RC0603JR-07100KL
Resistor	R5,R10	RES,10k,1/10W,±5%,SMD	2	Yageo	RC0603JR-0710KL
Resistor	R9	RES,1k,1/10W,±5%,SMD	1	Yageo	RC0603JR-071KL
Resistor	R11,R12	RES,22R,1/10W,±5%,SMD	2	Yageo	RC0603JR-0722RL
Resistor	R13	RES,1.5k,1/10W,±5%,SMD	1	Yageo	RC0603JR-071K5L
Resistor	MISO,CS,SCK, MOSI,3V	RES,4.7k,1/10W,±5%,SMD (Note 2)	2	Yageo	RC0603JR-074K7L
Resistor	CS01,CS02,C S04,CS05,CS0 7,CS08,CS10, CS11,CS13,CS 14,CS16,CS17	RES,20R,1/10W,±5%,SMD	12	Yageo	RC0603JR-0720RL
Resistor	CS03,CS06,C S09,CS12,CS1 5,CS18	RES,20R,1/10W,±5%,SMD (Note 3)	6	Yageo	RC0603JR-0720RL
Capacitor	C1,C2	CAP,100nF,16V,±20%,SMD	2	Yageo	CC0603MRX7R7BB104
Capacitor	C3,C4	CAP,33pF,50V,±5%,SMD	2	Yageo	CQ0603JRNPO9BN330
Capacitor	C5,C6,C8	CAP,1µF,16V,±10%,SMD	3	Yageo	CC0603KRX7R7BB105
Capacitor	C7	CAP,10nF,16V,±10%,SMD	1	Yageo	CC0603KRX7R7BB103
Capacitor	C9	CAP,10µF,16V,±20%,SMD	1	Yageo	CC0603MRX5R7BB106
Button	K1	Button SMD	1		

Bill of Materials, refer to Figure 3 above.

FxLED 6x11 ARRAY

Name	Symbol	Description	Qty	Supplier	Part No.
Diode	D1~D66	RGB LED, SMD	66	Everlight	9-237/R6GHBHC-A01/2T

Bill of Materials, refer to Figure 4 above.

Note 2: IS31FL3743B use SPI interface and MISO, CS, SCK, MOSI position need to short by 0R resistors. In order to use the Arduino for external control, MISO, CS, SCK, MOSI positions are changed by 4.7kΩ resistors.

Note 3: The value of these resistors on the evaluation board is 20Ω. For $PV_{CC}=5V$ and red LED application, prefer 51Ω for these resistors as shown in datasheet Figure 1.

18x11 DOTS MATRIX LED DRIVER WITH 12MHZ SPI

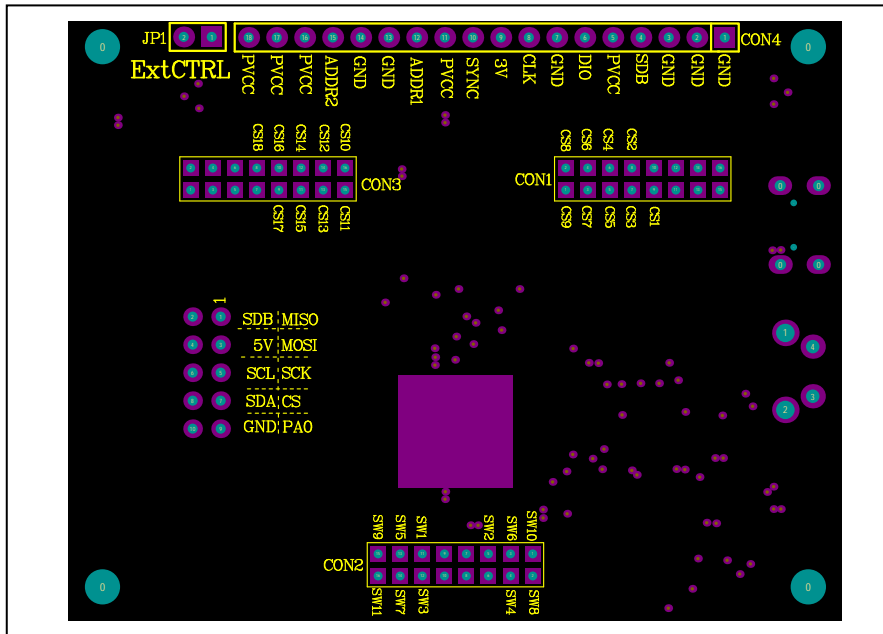


Figure 5: Board Component Placement Guide - Top Layer

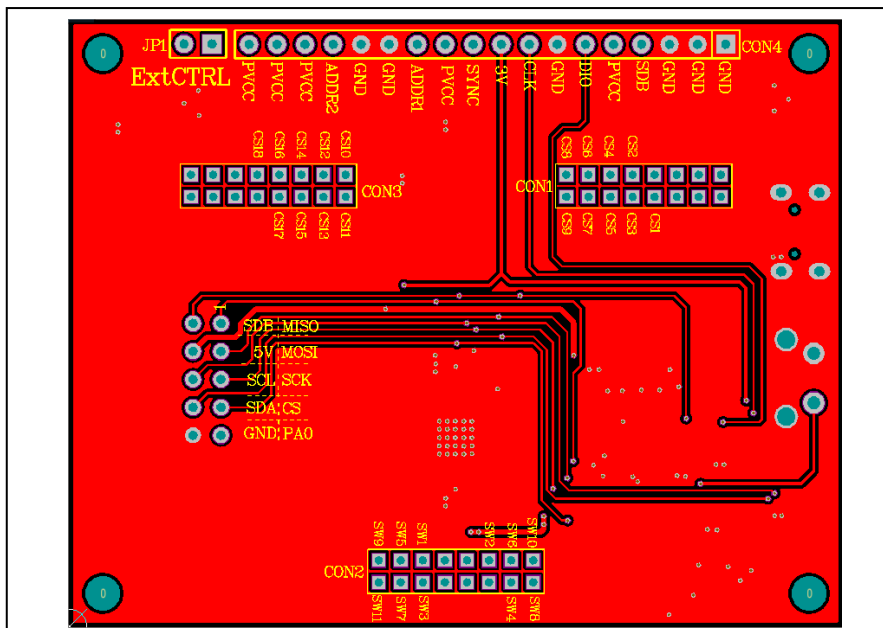


Figure 6: Board PCB Layout - Top Layer

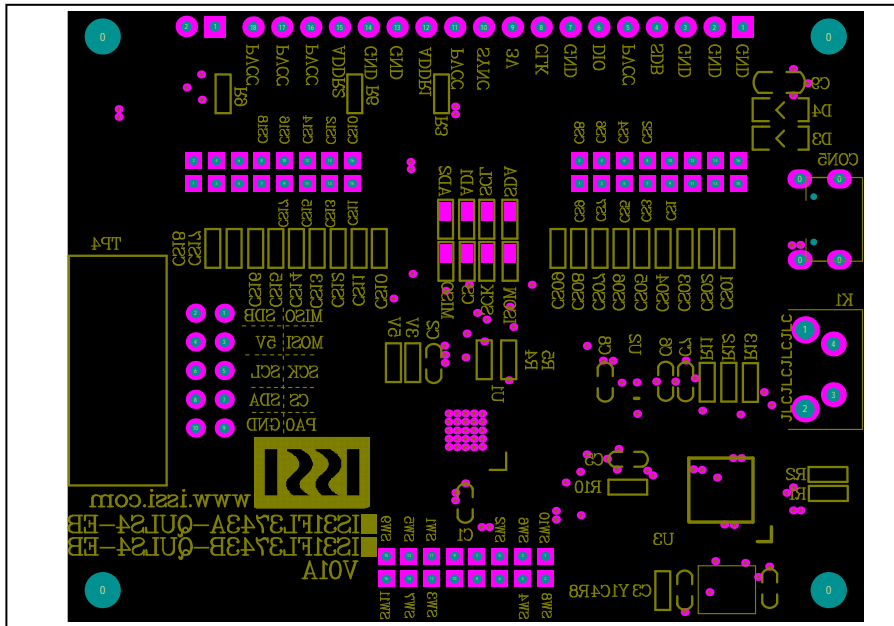


Figure 7: Board Component Placement Guide - Bottom Layer

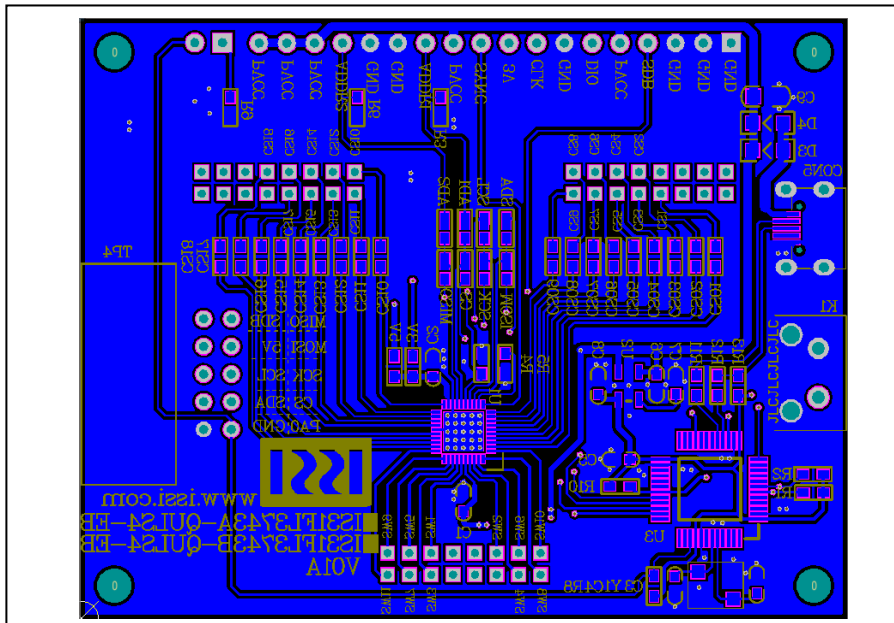


Figure 8: Board PCB Layout - Bottom Layer

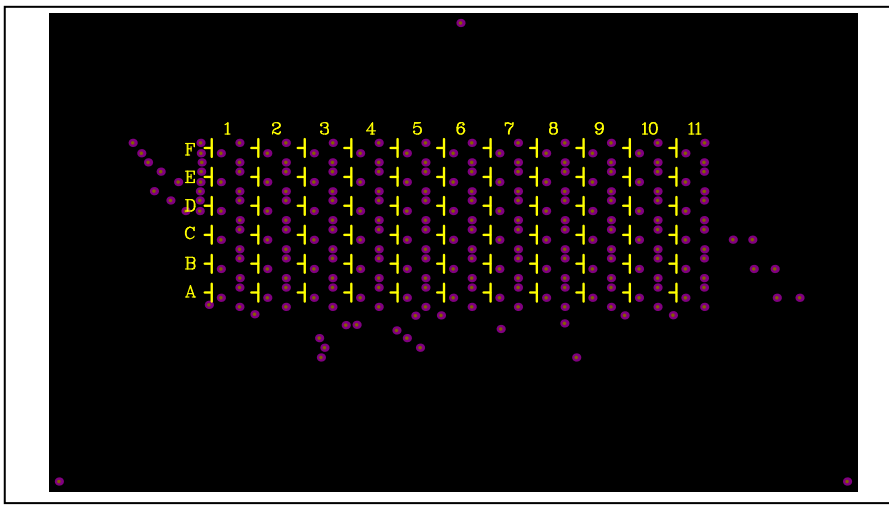


Figure 9: Board Component Placement Guide - Top Layer

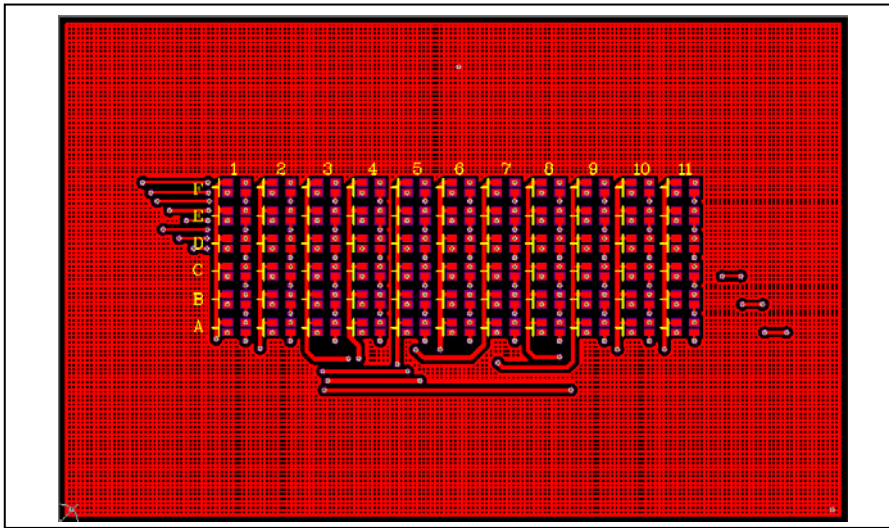


Figure 10: Board PCB Layout - Top Layer

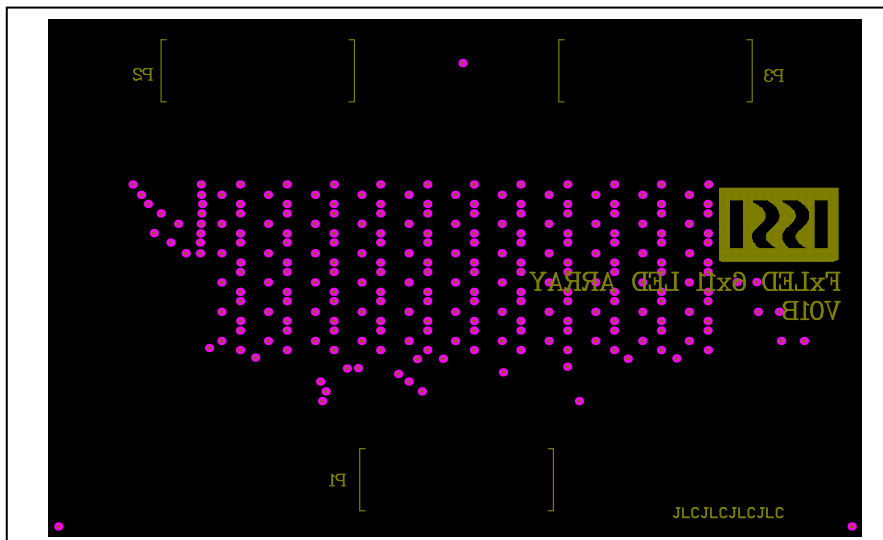


Figure 11: Board Component Placement Guide - Top Layer

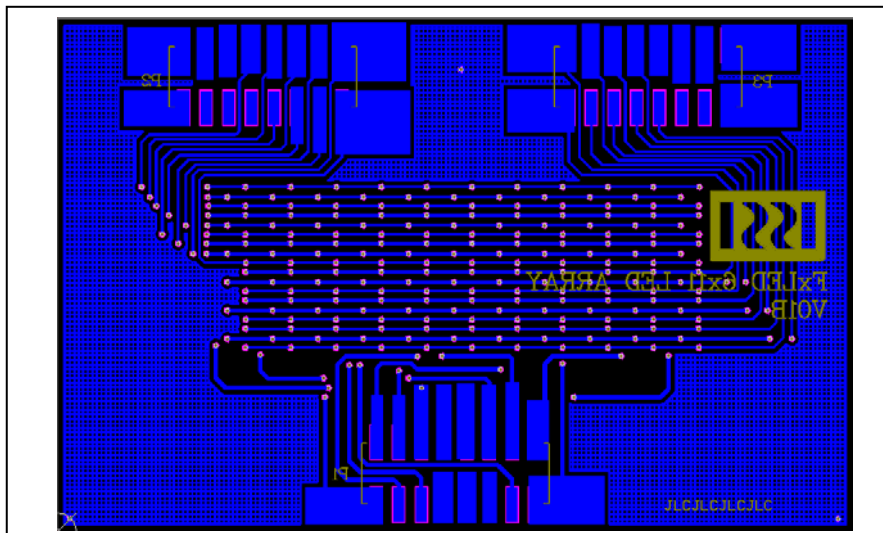


Figure 12: Board PCB Layout - Top Layer

Copyright © 2018 Integrated Silicon Solution, Inc. All rights reserved. ISSI reserves the right to make changes to this specification and its products at any time without notice. ISSI assumes no liability arising out of the application or use of any information, products or services described herein. Customers are advised to obtain the latest version of this device specification before relying on any published information and before placing orders for products. Integrated Silicon Solution, Inc. does not recommend the use of any of its products in life support applications where the failure or malfunction of the product can reasonably be expected to cause failure of the life support system or to significantly affect its safety or effectiveness. Products are not authorized for use in such applications unless Integrated Silicon Solution, Inc. receives written assurance to its satisfaction, that:

- a.) the risk of injury or damage has been minimized;
- b.) the user assume all such risks; and
- c.) potential liability of Integrated Silicon Solution, Inc is adequately protected under the circumstances



18x11 DOTS MATRIX LED DRIVER WITH 12MHZ SPI

REVISION HISTORY

Revision	Detail Information	Date
A	Initial release	2018.08.14

APPENDIX I : IS31FL3743B Arduino Test Code V01A

```

#include<SPI.h>
#include<avr/pgmspace.h>

#define Addr_Write_Page0 0x50
#define Addr_Write_Page1 0x51
#define Addr_Write_Page2 0x52
const int slaveSelectPin = 10;

byte PWM_Gamma64[64]=
{
  0x00,0x01,0x02,0x03,0x04,0x05,0x06,0x07,
  0x08,0x09,0x0b,0x0d,0x0f,0x11,0x13,0x16,
  0x1a,0x1c,0x1d,0x1f,0x22,0x25,0x28,0x2e,
  0x34,0x38,0x3c,0x40,0x44,0x48,0x4b,0x4f,
  0x55,0x5a,0x5f,0x64,0x69,0x6d,0x72,0x77,
  0x7d,0x80,0x88,0x8d,0x94,0x9a,0xa0,0xa7,
  0xac,0xb0,0xb9,0xbf,0xc6,0xcb,0xcf,0xd6,
  0xe1,0xe9,0xed,0xf1,0xf6,0xfa,0xfe,0xff
};

void setup()
{
  // put your setup code here, to run once:
  // set the slaveSelectPin as an output:
  pinMode (slaveSelectPin, OUTPUT);
  // initialize SPI:
  SPI.begin();
  SPI.beginTransaction(SPI_Settings(20000000, MSBFIRST, SPI_MODE0));
  //SPI.setClockDivider(SPI_CLOCK_DIV4);
  SPI.setDataMode(3);
}

void loop() {
  // put your main code here, to run repeatedly:
  mainloop();
}

void SPI_WriteByte(uint8_t Dev_Add,uint8_t Reg_Add,uint8_t Reg_Dat) //writing an LED register
{
  digitalWrite(slaveSelectPin, LOW); // take the SS pin low to select the chip:
  SPI.transfer(Dev_Add); // send in the address and value via SPI:
  SPI.transfer(Reg_Add);
  SPI.transfer(Reg_Dat);
  digitalWrite(slaveSelectPin, HIGH); // take the SS pin high to de-select the chip:
}

uint8_t SPI_ReadByte(uint8_t address)
{
  digitalWrite(slaveSelectPin,LOW);
  SPI.transfer(0x05);
  SPI.transfer(address);
  uint8_t result = SPI.transfer(0x00);
  digitalWrite(slaveSelectPin, HIGH);
  return result;
}

void Init3743B(void)
{
  int i,j;
  for(i=0;i<0xC7;i++)
  {
    SPI_WriteByte(Addr_Write_Page0,i,0);//PWM
  }

  for(i=1;i<0xC7;i++)
  {
    SPI_WriteByte(Addr_Write_Page1,i,0xff);//scaling
  }

  SPI_WriteByte(Addr_Write_Page2,0x02,0x70);
  SPI_WriteByte(Addr_Write_Page2,0x01,0xFF);//GCC
  SPI_WriteByte(Addr_Write_Page2,0x00,0x01);//
}

```

```

void mainloop(void)//
{
  int i,j;
  Init3743B();
  // digitalWrite(0, LOW); // turn the ARDUINO BOARD LED on (HIGH is the voltage level)
  while(1)
  {
    for(j=0;j<64;j++)//BLUE
    {
      for(i=1;i<0xC7;i=i+3)
      {
        SPI_WriteByte(Addr_Write_Page0,i,PWM_Gamma64[j]);//PWM}
      }
    }
    delay(500);

    for(j=63;j>=0;j--)
    {
      for(i=1;i<0xC7;i=i+3)
      {
        SPI_WriteByte(Addr_Write_Page0,i,PWM_Gamma64[j]);//PWM}
      }
    }
    delay(500);
    for(j=0;j<64;j++)//GREEN
    {
      for(i=2;i<0xC7;i=i+3)
      {
        SPI_WriteByte(Addr_Write_Page0,i,PWM_Gamma64[j]);//PWM}
      }
    }
    delay(500);

    for(j=63;j>=0;j--)
    {
      for(i=2;i<0xC7;i=i+3)
      {
        SPI_WriteByte(Addr_Write_Page0,i,PWM_Gamma64[j]);//PWM}
      }
    }
    delay(500);

    for(j=0;j<64;j++)//RED
    {
      for(i=3;i<0xC7;i=i+3)
      {
        SPI_WriteByte(Addr_Write_Page0,i,PWM_Gamma64[j]);//PWM}
      }
    }
    delay(500);

    for(j=63;j>=0;j--)
    {
      for(i=3;i<0xC7;i=i+3)
      {
        SPI_WriteByte(Addr_Write_Page0,i,PWM_Gamma64[j]);//PWM}
      }
    }
    delay(500);

    for(j=0;j<64;j++)//WHITE
    {
      for(i=1;i<0xC7;i++)
      {
        SPI_WriteByte(Addr_Write_Page0,i,PWM_Gamma64[j]);//PWM}
      }
    }
    delay(500);

    for(j=63;j>=0;j--)
    {
      for(i=1;i<0xC7;i++)
      {

```

18x11 DOTS MATRIX LED DRIVER WITH 12MHZ SPI

```
        SPI_WriteByte(Addr_Write_Page0,i,PWM_Gamma64[j]); //PWM}
    }
}
delay(500);
}
```